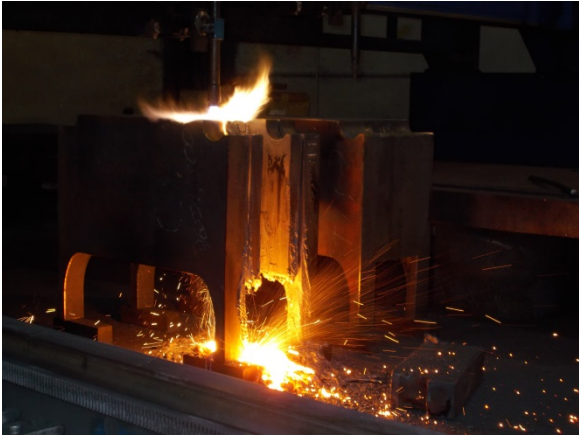


Hot tip: Flame cutting instead of milling

High ablation rates mean optimised parts costs, even for complex geometries



Picture 1: The job was to produce workpieces with the dimensions 400 x 710 x 840 mm from a 30-ton steel plate. This required ablation of large segments with tight radii.



Picture 2: These notches had to be accomplished in a wide range of different cutting heights, widths and depths.



Picture 3: Without resorting to milling, the thermal cutting specialists produced the complex geometries exactly to the customer's specifications.



Picture 4: From a steel block 450 mm thick and 1,000 mm high, four diagonals separated by a bar – in parallel pairs – were cut.

Pictures 1-4: © Jebens GmbH

We would be pleased to send you these or other images in printable resolution by e-mail

Such image material may be used solely for the Jebens GmbH subject stated here. Any and all other uses, and use for non-Jebens corporate purposes in particular, is hereby expressly prohibited.

impetus.PR
Agentur für Corporate Communications GmbH

Ursula Herrling-Tusch
Charlottenburger Allee 27-29
D-52068 Aachen
Tel: +49 [0] 241 / 1 89 25 - 10
Fax: +49 [0] 241 / 1 89 25 - 29
E-Mail: herrling-tusch@impetus-pr.de